

PLEASE READ THE INSTRUCTIONS BEFORE FITTING THE KIT
If you have a problem, however small, call our Technical Department.
Tel:- 01925 636950. Fax:- 01925 418948. Monday to Friday 9am - 5pm.

- 1** Remove the airbox from the rubber intake hose. Pull out the black resonator box.
Drawing A
- 2** Fit the new bracket to the metal tube using the stud, nut and washer. Fit the pipe into the intake hose. Fit the bracket to the rear air box mounting using the M6 screw and washer supplied, **Drawing B**. Fit the filter and adjust until the K&N logo is straight before tightening in place. Tighten the clip until the filter just rotates, then give one full turn (360 degrees). No more. **Don't overtighten the clips.**
- 3** Remove the plastic screen from behind the grille area. Cut out the section shown and replace. **Drawing C**.
- 4 Cold air system**
Remove one of the plastic sleeves from the flexi cold air hose, and carefully lengthen the hose to approx. 20" / 50cm. Screw the flexi hose firmly over the tapered end of the rubber hose. **Drawing D**.
- 5** Fit the new hose assembly down behind the plastic screen and through the cut-out.
Drawings D & F. Secure the rubber hose to the upright with a medium plastic tie.
Drawings E & F.
- 6** Using a long plastic tie attach the flexi hose to the bracket. **Drawing D**. Finish the hose approximately **10cm / 4"** from the filter, **no nearer**.
- 7 Tuning**
CAT. Car, no adjustment can be made.
An increase in fuel may be required if further tuning modifications are carried out.
- 8 Filter maintenance.**
Under normal conditions clean and reoil the filter at approx. 40,000 miles / 65,000 Km.
Use only K&N cleaner and oil and follow the instructions carefully.

K&N filters are pre-oiled ready to fit.

The advantage's of K&N's cold air intake system.
Cooler air being denser, will show positive improvements in power over filter systems that draw hot air from the engine bay.

This Kit Should Contain :-

- 1 x Clamp-on filter.
- 1 x Cold air hose assembly.
- 1 x Rubber cold air hose.
- 1 x Metal tube.
- 1 x Instruction sheet.
- 1 x Instruction pack:-
 - 1 x Filter maintenance sheet.
 - 1 x K&N window sticker.
 - 1 x Million mile warranty card.
 - 1 x Leaflet.
- 1 x Fixing kit containing :-
 - 2 x Plastic cable tie (35cm long).
 - 1 x Plastic cable tie (19cm long).
 - 1 x M6 x 16 hex screw.
 - 1 x M6 hex. nut.
 - 2 x M6 spring washer
 - 1 x Hose Clip #48
 - 1 x Bracket.

**IMPORTANT INSTRUCTIONS
FOR ROUND ENTRY
CLAMP ON AIR FILTERS**

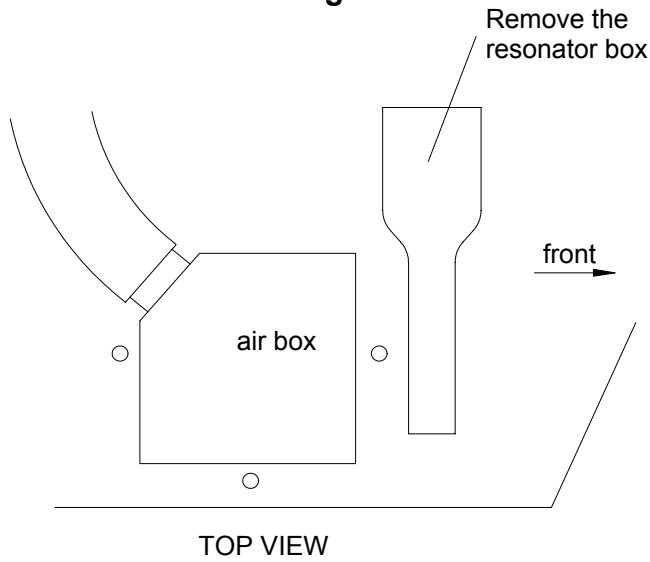
Gently tighten the hose clip to the point where the filter will just rotate on the pipe or intake flange. Reposition the K&N logo straight, then **give the clip two turns i.e. 360 , no more.**

FITTING YOUR OWN 57i KIT

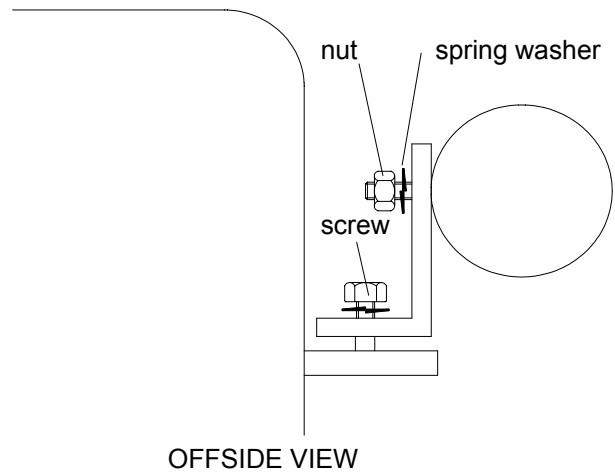
If not, **it is essential** that the person fitting the kit (e.g. mechanic) **carefully follows these particular instructions** even if he has fitted K&N kits before. This will save you both time and money. Kits incorrectly fitted may show a loss in performance e.g. the positioning of the essential cold air hose, (flexi expandable and rubber hoses are used).

A final check under the bonnet, by yourself, with the instructions, would seem sensible.

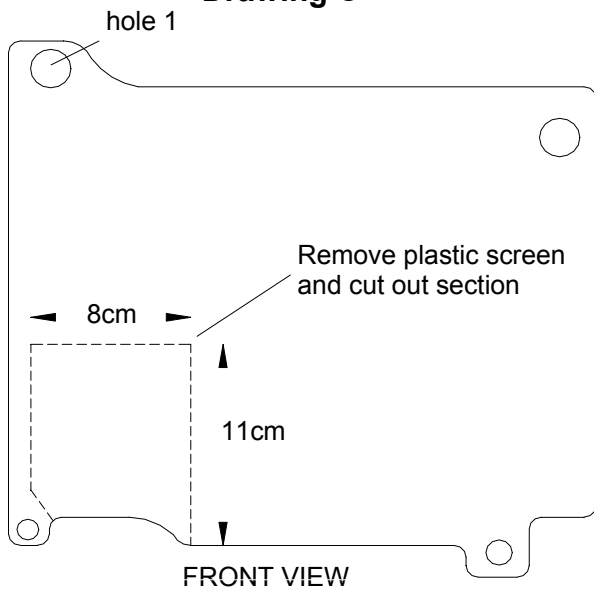
Drawing A



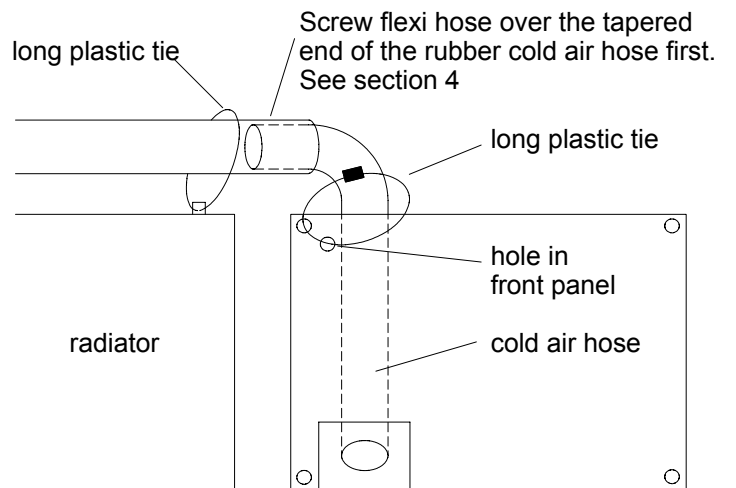
Drawing B



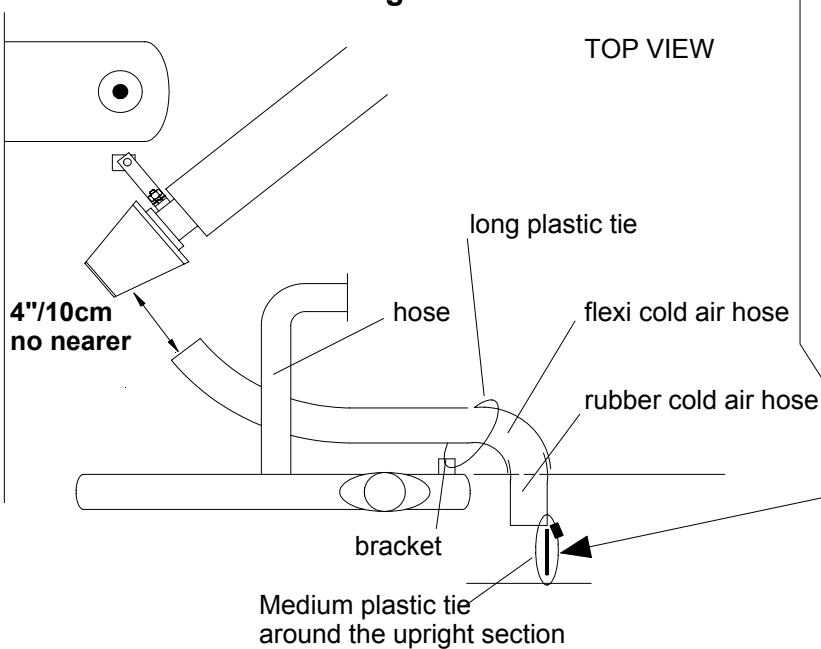
Drawing C



Drawing D



Drawing E



Drawing F

