

PLEASE READ THE INSTRUCTIONS CAREFULLY BEFORE FITTING THE KIT.

If you have a problem, however small, call our Technical Department.

Tel:- 01925 636950. Fax:- 01925 243111. Mon - Thurs 8.30 - 5pm.

- 1 Remove the standard air box system.
- 2 Turn the air box upside down, remove the screw and pull out the sensor attached to the two hoses, **Drawing A**, refit as **Drawing C**.
- 3 Remove the air box from the Mass Air Sensor **MAS**. Remove the 'O' ring from the air box.
- 4 **Drawing B**. Fit the hose clip around the **MAS** and position the 'U' bracket under the hose clip. Attach the long bracket to the 'U' bracket with the screw washer and nut . Attach the long bracket to the suspension turret screw. Fit the spacer washer first. **Drawing C**.
- 5 **Fit the 'O' ring** (from the air box) to space out the filter and improve air flow. **Drawing B**. Fit the filter but **don't overtighten the hose clip**.
- 6 Position the filter as **Drawing C** and push in the sensor. Secure with a medium sized plastic tie. Remove the plastic clip on the two hoses **Drawing F**. Attach a long plastic tie around the hoses. **Don't overtighten the tie**.
- 7 **Cold air system**
Remove the plastic screen from the grille area. **Drawing F**. Cut out hole 7.0cm diameter or a square 7.0 x 7.0cm to allow the hose to fit up against the grille. Replace the plastic screen.
- 7.2 **Carefully expand** the flexi cold air pipe to approx. 25"/63cm. Make two holes in the flexi hose. Attach to the grille with two small plastic ties. **Drawing D**.
- 7.3 Bend the hose upwards and attach as **Drawing B**. Finish the hose 4"/10cm from the filter, **NO NEARER**.
- 7.4 **M-TEC KIT**.
Fit the cold air system as the standard car, attaching the flexi hose to the wire mesh grille, using the two small plastic ties. **Drawing E**.
- 8 **Tuning**.
CAT. Cars. No adjustments are required.
An increase in fuel may be required if further engine modifications are to be carried out
- 9 **Filter Maintenance**.
Under normal conditions, clean and reoil the filter at approx. 50,000 miles/80,000 km.
Use only K&N Cleaner and oil and follow the instructions carefully.

K&N filters are pre-oiled ready to fit.

The advantages of K&N's cold air intake system.

Cooler air being denser, will show positive improvements in power over filter systems that draw hot air from the engine bay.

This Kit Should Contain :-

- 1 x Air filter.
- 1 x Cold air hose assembly.
- 1 x Instruction sheet.
- 1 x Instruction pack :-
 - 1 x Filter maintenance sheet.
 - 1 x K&N window sticker.
 - 1 x Million mile warranty card.
 - 1 x Leaflet.
- 1 x Fixing kit :-
 - 1 x Hose clip size 40.
 - 2 x Plastic cable ties (10cm long).
 - 1 x Plastic cable tie (19cm long).
 - 1 x Plastic cable tie (35cm long).
 - 1 x Metal washer.
 - 1 x M6 x 12 hex screw.
 - 1 x 6mm spring washer.
 - 1 x M6 hex nut.
 - 1 x Hose clip size 44.
 - 2 x Brackets.

**IMPORTANT INSTRUCTIONS
FOR ROUND ENTRY
CLAMP ON AIR FILTERS**

Gently tighten the hose clip to the point where the filter will just rotate on the pipe or intake flange. Reposition the K&N logo straight, then **give the clip two turns i.e. 360 , no more.**

FITTING YOUR OWN 57i KIT

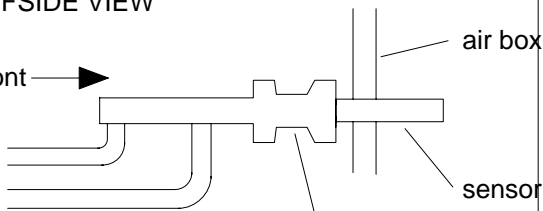
If not, **it is essential** that the person fitting the kit (e.g. mechanic) **carefully follows these particular instructions** even if he has fitted K&N kits before. This will save you both time and money. Kits incorrectly fitted may show a loss in performance e.g. the positioning of the essential cold air hose, (flexi expandable and rubber hoses are used).

A final check under the bonnet, by yourself, with the instructions, would seem sensible.

Drawing A

OFFSIDE VIEW

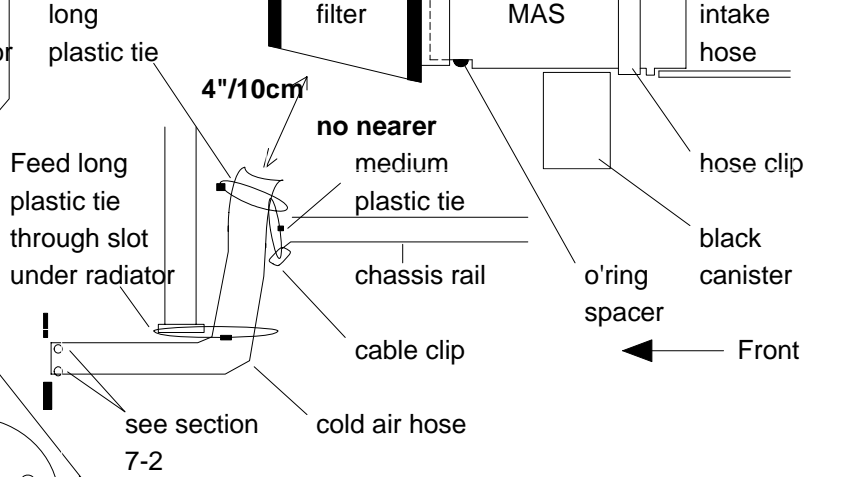
Front →



Pull out from the air box and refit as drawing C.

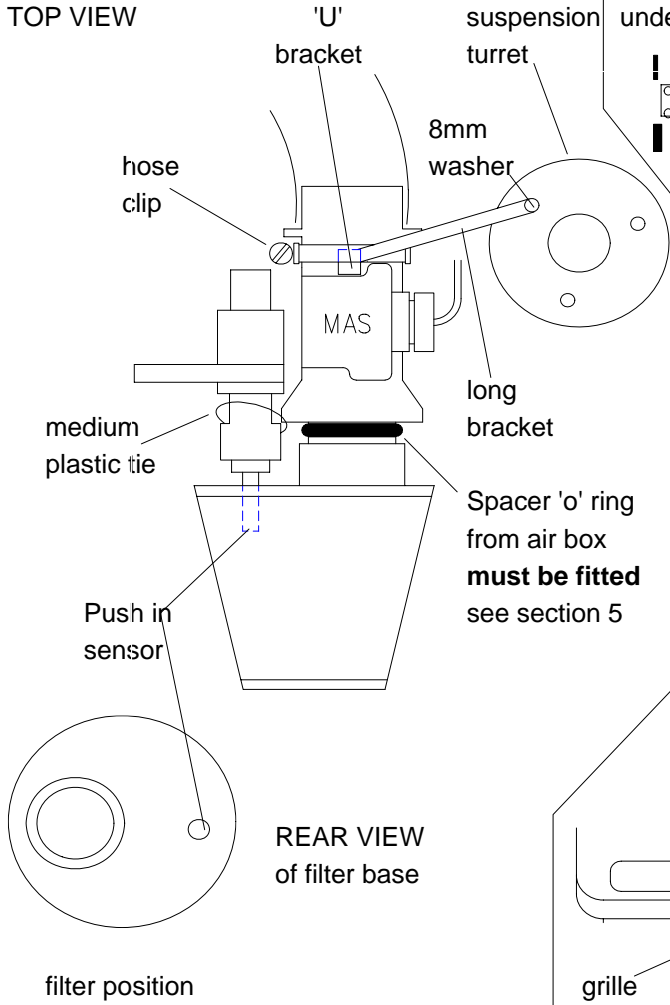
Drawing B

NEARSIDE VIEW

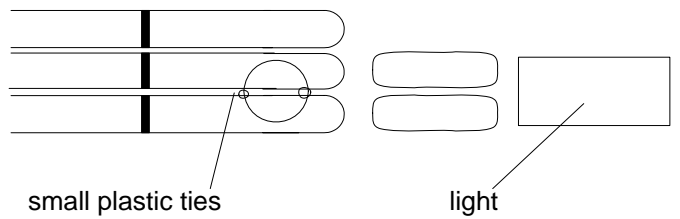


TOP VIEW

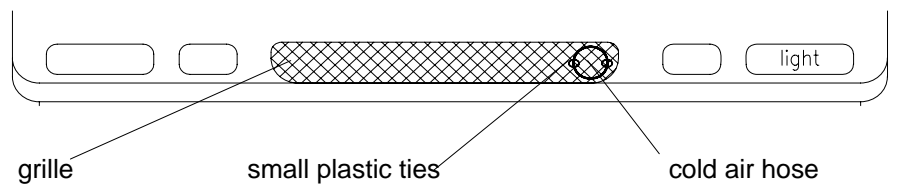
Drawing C



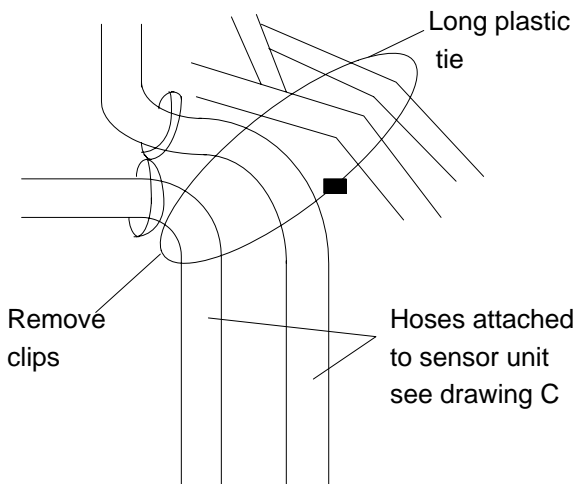
Drawing D



Drawing E M-TEC kit



Drawing F



Drawing G

