



# FUEL INJECTION PERFORMANCE KIT FIPIK

INTAKE SYSTEMS FOR VEHICLES LISTED ARE 50 STATE LEGAL. SEE KNFILTERS.COM FOR CARB STATUS ON EACH PART FOR A SPECIFIC VEHICLE.

## INSTALLATION INSTRUCTIONS

### 57-2516

### FORD

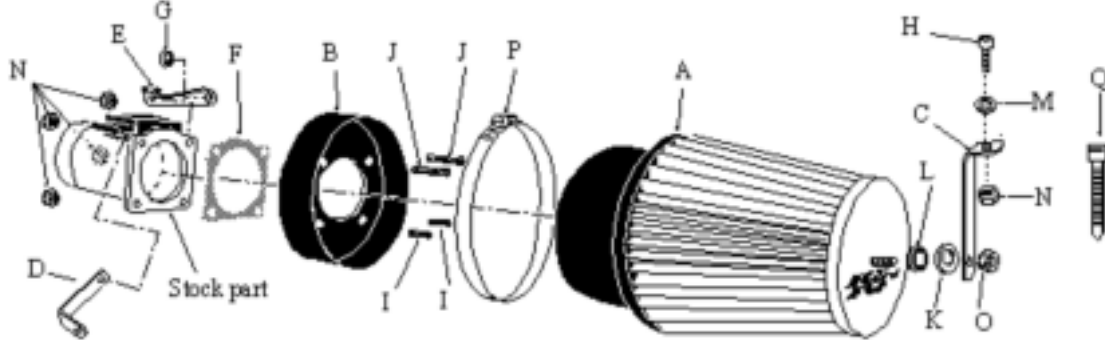
### 1996-97 F-Series Pickup

### V8-7.5L W / Mass Air

NOTE: This kit was not designed to fit vehicles with a body lift.

#### TOOLS NEEDED:

- Drill
- 1/4" drill bit
- 5mm Allen Wrench
- 10mm Wrench
- Flat Blade Screwdriver
- 7/16" Wrench



#### PARTS LIST:

Desc.	QTY.	Part #
A Air filter	1	RF-1026
B Adapter	1	08854
C Long "L" bracket	1	07091
D Short "L" bracket	1	070622
E Temp. sensor bracket	1	07107
F Mass air gasket	1	09984
G Temp. sensor gasket	1	09767
H 6mm x 16mm allen bolt	1	07818
I 6mm x 20mm allen bolt	2	07852
J 6mm x 25mm allen bolt	2	07859
K 1" OD fender washer	1	08160
L Rubber washer	1	21685
M 5/8" OD flat washer	1	08275
N 6mm nylock nut	5	07553
O 1/4 - 20 nylock nut	1	07517
P Hose clamp #104	1	08697
Q 6" zip tie	1	21591

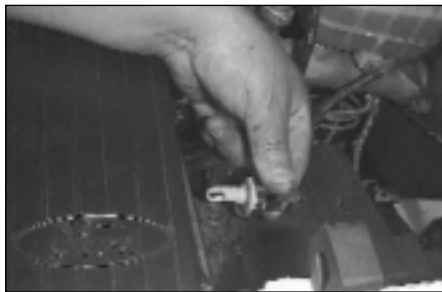
**NOTE: FAILURE TO FOLLOW INSTALLATION INSTRUCTIONS AND NOT USING THE PROVIDED HARDWARE MAY DAMAGE THE INTAKE TUBE, THROTTLE BODY AND ENGINE.**

#### TO START:

1. Turn the ignition OFF and disconnect the vehicle's negative battery cable.



2. Disconnect the mass air sensor electrical connection.



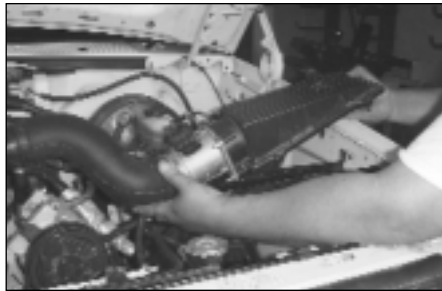
3. Rotate and remove the air temperature sensor from the airbox.



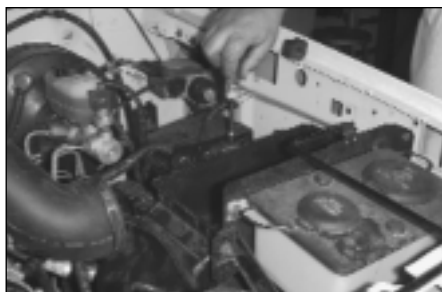
4. Loosen and remove the four bolts that secure the airbox top.



5. Loosen the hose clamp at the mass air sensor.



6. Remove the airbox lid and pull it away from the intake hose. Remove the filter from the airbox.



7. Loosen the two bolts that secure the airbox base.

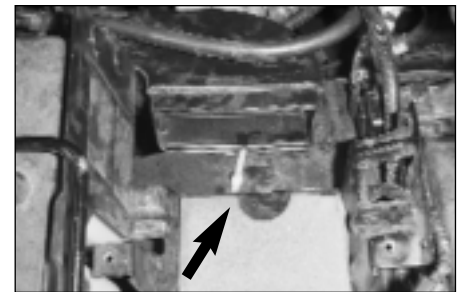


8. Disconnect the air inlet from the airbox base and remove the airbox base.

**NOTE: K&N Engineering, Inc., recommends that customers do not discard factory air intake.**



9. Drill a hole through the air inlet tube and inner fender.

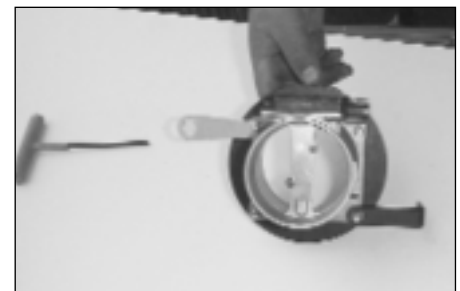


10. Using zip tie provided, secure the air inlet tube to the inner fender.



11. Using a 10mm wrench, loosen and remove the four nuts that hold the mass air sensor to the airbox lid.

**NOTE: The factory screen will not be used.**



12. Secure the mass air sensor adaptor to the mass air sensor using the rubber gasket and hardware provided, with brackets positioned as shown.



13. Using a 10mm socket, loosen and remove the support bracket nut as shown.



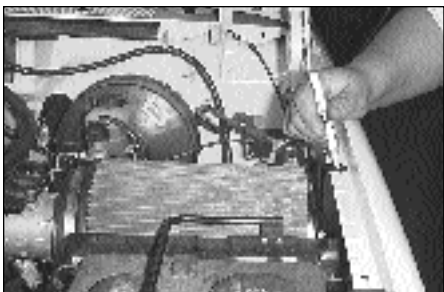
14. Install the mass air sensor into the intake tube and slide bracket over stud, then secure with nut that was removed in previous step.



15. Using the hardware provided, install and secure the bracket onto the end of the Filtercharger element.



16. Install the Filtercharger element onto the mass air sensor adaptor.



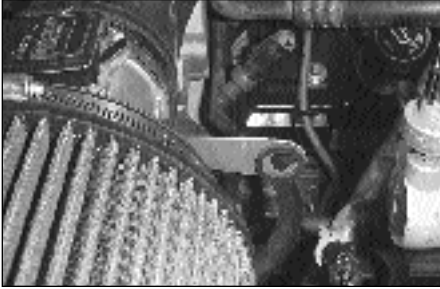
17. Position bracket on top of fender, align and mark hole for drilling.



18. Using a 1/4" drill bit, bore the previously marked location.



19. Reinstall the Filtercharger element and secure the bracket with the hardware provided.



20. Install the gasket provided onto the air temperature sensor bracket as shown.



21. Insert the air temperature sensor into the bracket as shown.



22. Reconnect the mass air sensor electrical connection.

23. Reconnect the vehicle's negative battery cable. Double check to make sure everything is tight and properly positioned before starting the vehicle.

24. The C.A.R.B. exemption sticker, (attached), must be visible under the hood so that an emissions inspector can see it when the vehicle is required to be tested for emissions. California requires testing every two years, other states may vary.

25. It will be necessary for all FIPK's to be checked periodically for realignment, clearance and tightening of all connections. Failure to follow the above instructions or proper maintenance may void warranty.

#### ROAD TESTING:

1. Start the engine with the transmission in neutral or park, and the parking brake engaged. Listen for air leaks or odd noises. For air leaks secure hoses and connections. For odd noises, find cause and repair before proceeding. This kit will function identically to the factory system except for being louder and much more responsive.

2. Test drive the vehicle. Listen for odd noises or rattles and fix as necessary.

3. If road test is fine, you can now enjoy the added power and performance from your kit.

4. K&N suggests checking the Filtercharger element periodically for excessive dirt build-up. When the element becomes covered in dirt (or once a year), service it according to the instructions on the Recharger service kit, part number 99-5050 or 99-5000.

**INTAKE SYSTEMS FOR VEHICLES LISTED ARE 50 STATE LEGAL. SEE KNFILTERS.COM FOR CARB STATUS ON EACH PART FOR A SPECIFIC VEHICLE.**