



# TYPHOON INTAKE SYSTEMS

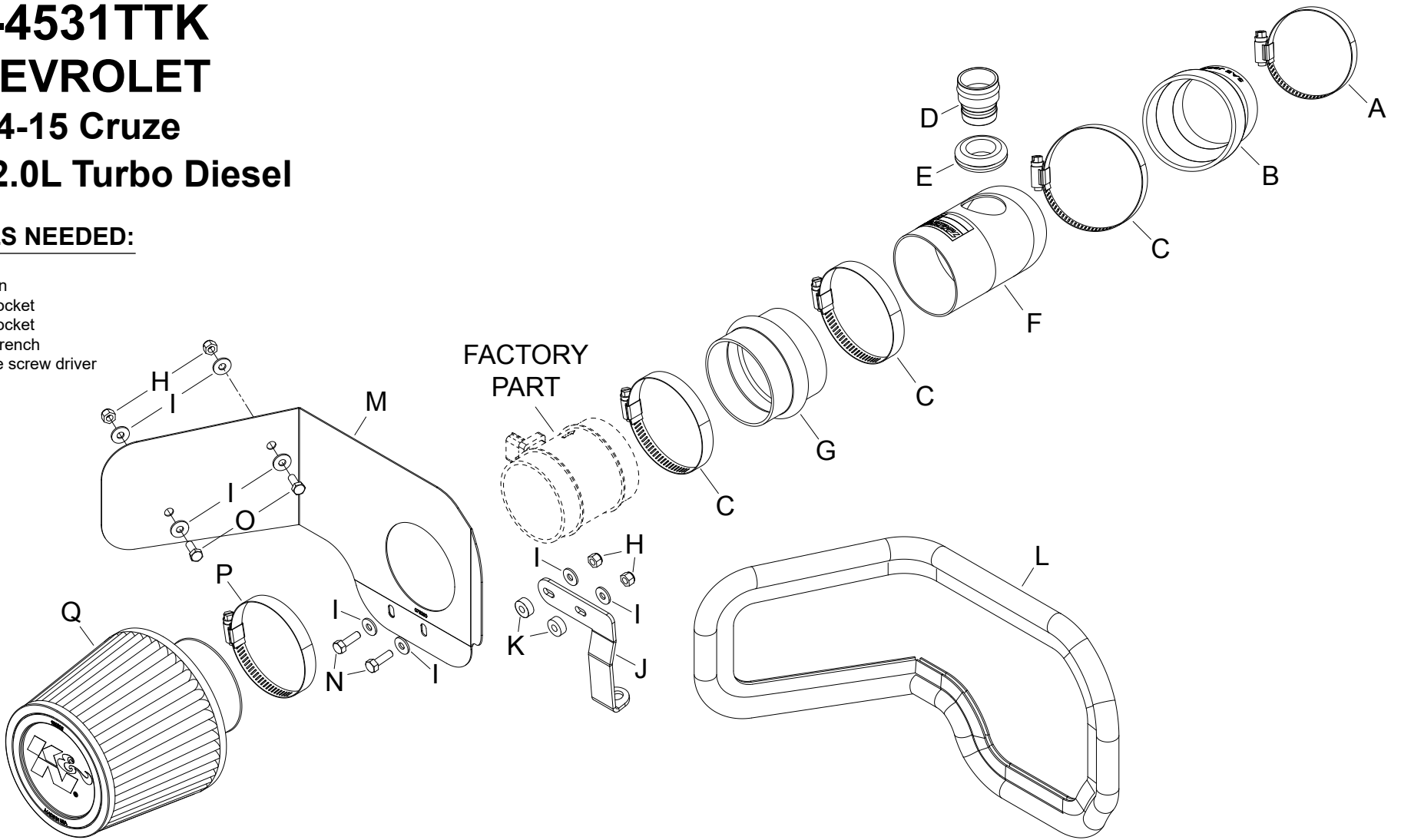
INTAKE SYSTEMS FOR VEHICLES LISTED ARE 50 STATE LEGAL. SEE KNFILTERS.COM FOR CARB STATUS ON EACH PART FOR A SPECIFIC VEHICLE.

## INSTALLATION INSTRUCTIONS

**69-4531TTK**  
**CHEVROLET**  
**2014-15 Cruze**  
**L4-2.0L Turbo Diesel**

**TOOLS NEEDED:**

- ratchet
- extension
- 15mm socket
- 10mm socket
- 10mm wrench
- flat blade screw driver



**PARTS LIST:**

Description	Qty.	Part #	Description	Qty.	Part #	Description	Qty.	Part #
A HOSE CLAMP #40	1	08554	G HOSE; 3" ID X 2-1/2" L HUMP	1	087121	M HEAT SHIELD	1	073200
B HOSE; 3" TO 2-1/2" ID X 3" L	1	08713	H NUT; 6MM NYLOCK, HEXHEAD	4	07512	N BOLT; M6 X 1.00" X 20MM HEX	2	07795
C HOSE CLAMP #48	3	08601	I WASHER; 6MM FLAT, SS	8	08269	O BOLT; 6MM-1.00 X 16MM, SS	2	07812
D ADAPTOR; 1-1/8"OD QUICK	1	088012	J BRACKET; "L", 69-4521, STL	1	083149	P HOSE CLAMP # 52	1	08610
E GROMMET; 1-3/4"OD, 1"ID, 1/2"	1	082000	K SPACER: .625" OD X .250"ID	2	06555	Q AIR FILTER	1	RU-5176
F INTAKE TUBE	1	27628	L EDGE TRIM (39")	1	102496			

**If you need any assistance please call 1-800-858-3333 to speak with a representative in our Customer Service Center before returning the product.**

**NOTE: FAILURE TO FOLLOW INSTALLATION INSTRUCTIONS AND NOT USING THE PROVIDED HARDWARE MAY DAMAGE THE INTAKE TUBE, THROTTLE BODY AND ENGINE.**

**TO START:**

1. Turn off the ignition and disconnect the negative battery cable.

**NOTE: Disconnecting the negative battery cable erases pre-programmed electronic memories. Write down all memory settings before disconnecting the negative battery cable. Some radios will require an anti-theft code to be entered after the battery is reconnected. The anti-theft code is typically supplied with your owner's manual. In the event your vehicles anti-theft code cannot be recovered, contact an authorized dealership to obtain your vehicles anti-theft code.**



2. Release the red locking tab and then disconnect the mass air sensor electrical connection.



3. Release the locking tabs and then disconnect the pressure sensor from the factory intake tube.



4. Loosen the hose clamps securing the intake tube to the turbo inlet and mass air sensor, and then remove the factory intake tube from the vehicle.



5. Lift up the air filter assembly to gain access to the electrical box attached to the air filter housing. Remove the two bolts that secure the electrical box and separate it from the air filter housing and then remove the air filter assembly from the vehicle. **NOTE: The air box has a drain tube attached that will need to be separated before the housing is removed.** **NOTE: K&N Engineering, Inc., recommends that customers do not discard factory air intake.**



6. Remove the motor mount bolt show.





7. Install the heat shield mounting bracket (083149) onto the engine mount and secure it with the bolt removed in the previous step.



8. Install the provided edge trim onto the heat shield as shown.

**NOTE: Some trimming of the edge trim will be necessary.**



9. Install the heat shield onto the mounting bracket and secure with the provided hardware and spacers, the spacers are to be placed between the bracket and heat shield.



10. Using the provided hardware, secure the electrical box to the heat shield as shown.



11. Install the provided step coupler (08713) onto the turbo inlet and secure with the provided hose clamp.



12. Install the provided grommet into the K&N® intake tube as shown.



13. Install the provided quick disconnect fitting into the grommet installed into the K&N® intake tube.



14. Install the K&N® intake tube into the coupler at the turbo but do not completely tighten at this time.



15. Loosen the hose clamp and remove the mass air sensor from the factory air filter housing.



16. Install the provided hump coupler (087121) onto the mass air sensor as shown and secure with the provided hose clamp.

**NOTE: Be sure to install the coupler onto the correct side of the sensor, the arrow on the sensor should point to the coupler when correct.**



17. Slip the mass air sensor through the hole in the heat shield and then slide the coupler hose onto the K&N® intake tube. Adjust the tube and hoses for best fit and then secure the hose clamps.



18. Install the K&N® air filter and secure it with the provided hose clamp.

**NOTE: Drycharger® air filter wrap; part # RX-4990DK is available to purchase separately. To learn more about Drycharger® filter wraps or look up color availability please visit <http://www.knfilters.com>®.**



19. Connect the Pressure sensor to the quick disconnect fitting installed into the K&N® intake tube.



20. Reconnect the mass air sensor.



21. Reconnect the vehicle's negative battery cable. Double check to make sure everything is tight and properly positioned before starting the vehicle.

22. The C.A.R.B. exemption sticker, (attached), must be visible under the hood so that an emissions inspector can see it when the vehicle is required to be tested for emissions. California requires testing every two years, other states may vary.

23. It will be necessary for all K&N® high flow intake systems to be checked periodically for realignment, clearance and tightening of all connections. Failure to follow the above instructions or proper maintenance may void warranty.

#### ROAD TESTING:

1. Start the engine with the transmission in neutral or park, and the parking brake engaged. Listen for air leaks or odd noises. For air leaks secure hoses and connections. For odd noises, find cause and repair before proceeding. This kit will function identically to the factory system except for being louder and much more responsive.

2. Test drive the vehicle. Listen for odd noises or rattles and fix as necessary.

3. If road test is fine, you can now enjoy the added power and performance from your kit.

4. K&N Engineering, Inc., requires cleaning the intake system's air filter element every 100,000 miles. When used in dusty or off-road environments, our filters will require cleaning more often. We recommend that you visually inspect your filter once every 25,000 miles to determine if the screen is still visible. When the screen is no longer visible some place on the filter element, it is time to clean it. To clean and re-oil, purchase our filter Recharger® service kit, part number 99-5050 or 99-5000 and follow the easy instructions.

**INTAKE SYSTEMS FOR VEHICLES LISTED ARE 50 STATE LEGAL. SEE KNFILTERS.COM FOR CARB STATUS ON EACH PART FOR A SPECIFIC VEHICLE.**

\* FREE K&N® decal To register your warranty, please see us online at [knfilters.com/register](http://knfilters.com/register). FREE K&N® decal \*