



INSTALLATION INSTRUCTIONS

Part Number SU-2501

This filter fits: 2001-03 Suzuki DRZ 250

Congratulations, you have purchased the finest air filter that money can buy. With proper care, this filter will last 1 million miles or more. This filter is a direct replacement for the stock air filter, and no modifications will be required. However the following procedure **MUST** be followed to ensure a proper fit and seal of the K&N Filtercharger®.

- 1) Remove stock filter according to the owners manual.
- 2) Clean air filter sealing area in the air box.
- 3) Reinstall filter into the air box making sure that the filter is properly situated.
- 4) Reinstall wire clasp to the air filter, making sure it seats properly on top of the air filter perch. (See fig. 1)

THESE INSTRUCTIONS MUST BE FOLLOWED EVERY TIME THE FILTER IS SERVICED, OTHERWISE THE FILTER MAY NOT SEAL, AND DAMAGE TO THE ENGINE COULD RESULT.

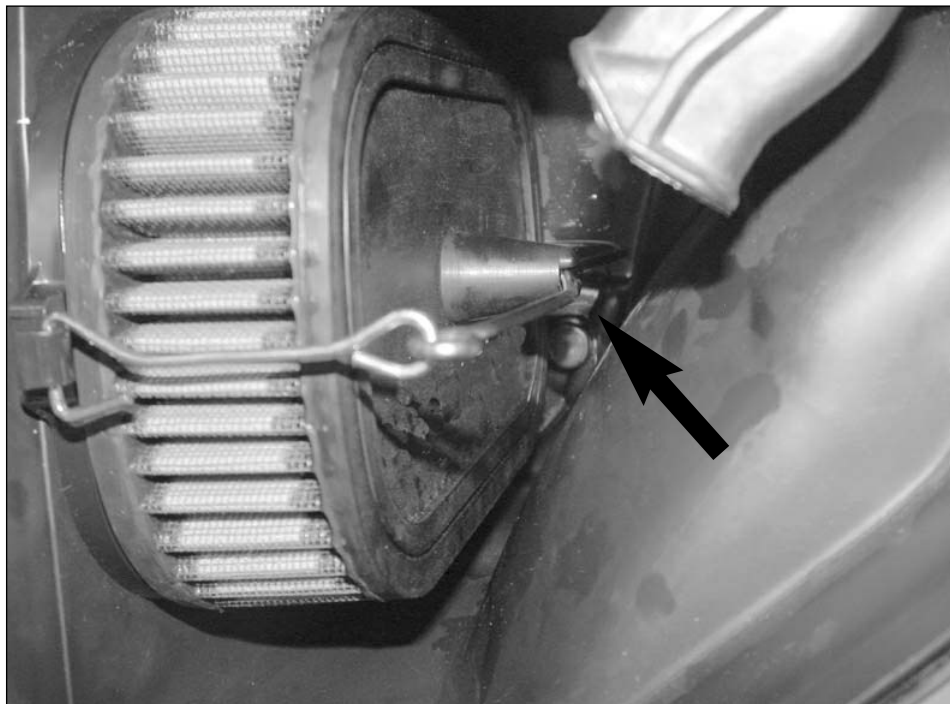


FIG. 1